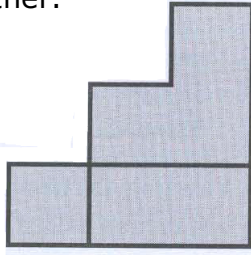


Points of View B

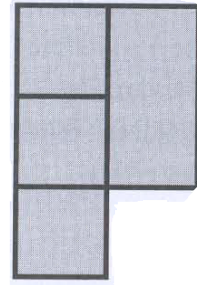
Points of View B Clue 1

View from the South. The solid lines are edges that do not touch each other.



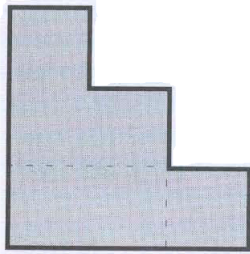
Points of View B Clue 4

View of the top.



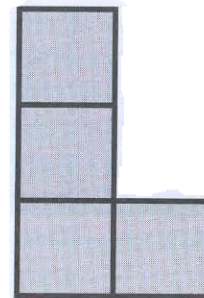
Points of View B Clue 2

View from the North. Dashed lines show hidden edges.



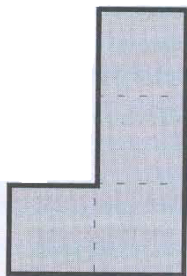
Points of View B Clue 5

View from the West. Lines between blocks do not appear, only edges.



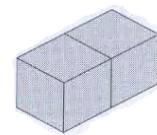
Points of View B Clue 3

View from the East. Dashed lines show hidden edges. There are 8 blocks in the structure.



Points of View B Clue 6

Remember: The "seams" between blocks do not show. A side view of two blocks:



Looks like this:



Not this:

