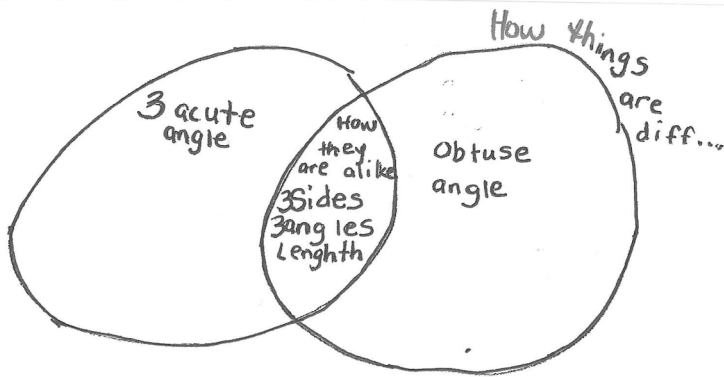
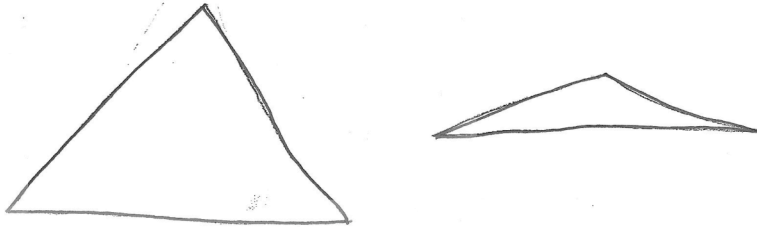


*Student's Task:* Draw two different triangles. Use a Venn diagram to show how they are alike and how they are different.

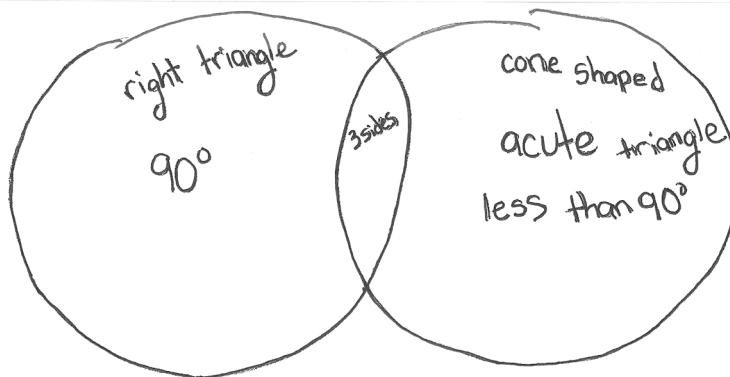
*Teacher's Task:* Examine the student responses to the task.

Identify what you know about what the student was thinking/doing. For which responses do you have to infer more than for others?

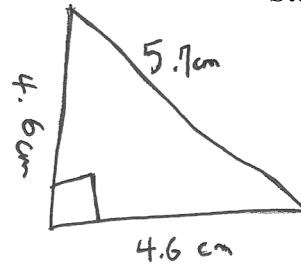
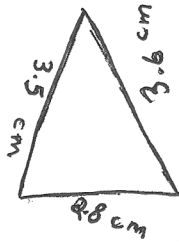
Student A



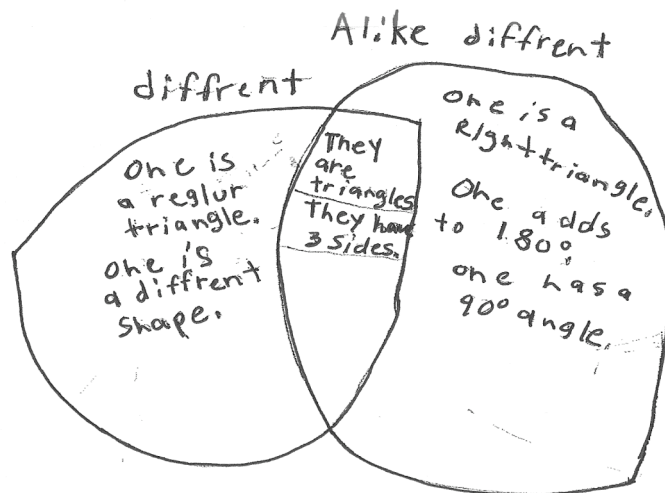
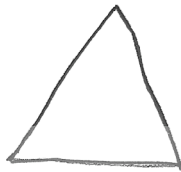
Student B



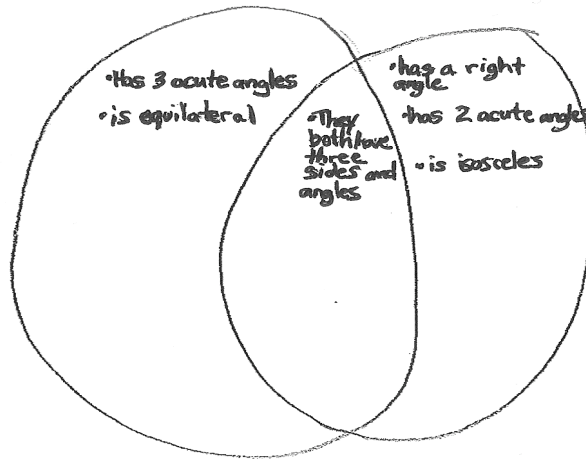
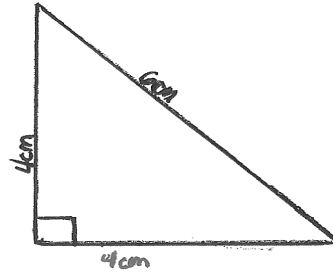
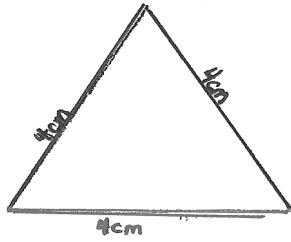
Student C



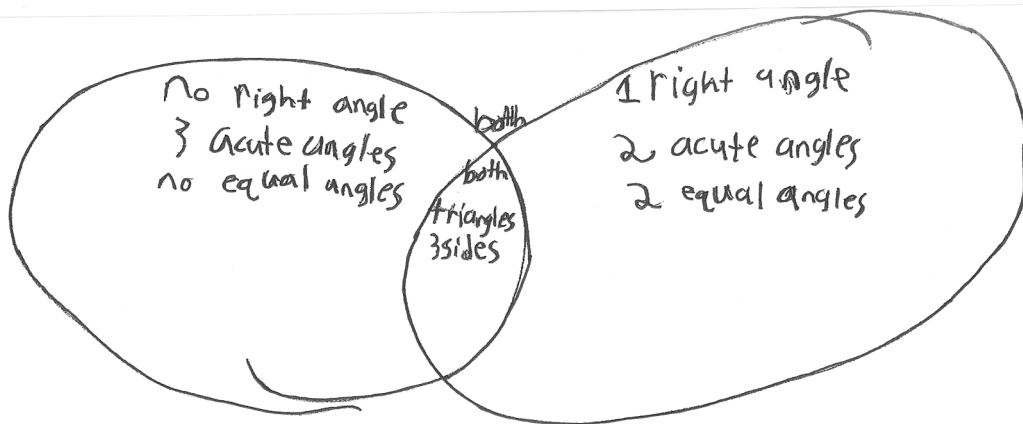
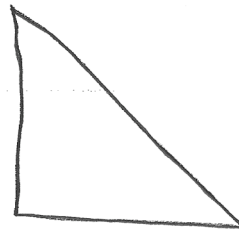
Student D



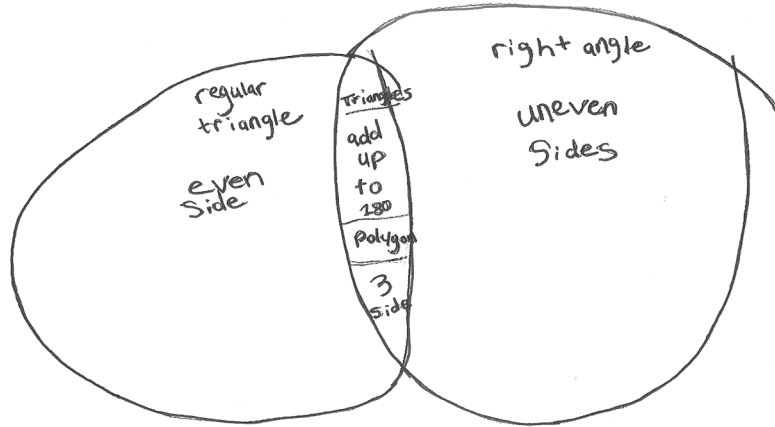
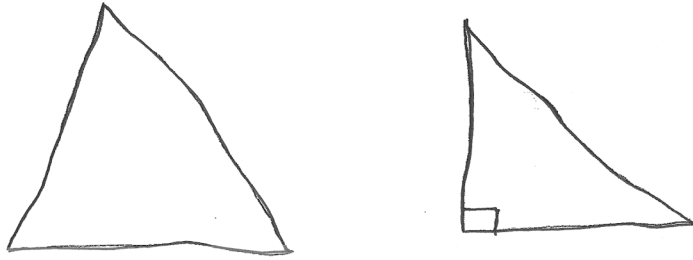
Student E



Student F



Student G



Student H

